



The roof garden of the Shop & Trade Office Building about a year after its completion.

### Project Data

Area: ca. 1.000 m<sup>2</sup>

Construction Year: 2009

Architect:  
Maria Kokkinou & Andreas  
Kourkoulas, Athen

Landscape architect:  
H. Pangalou and Associates, Athen

System build-up with Floradrain®  
FD 25-E, FD 60 and Georaster®

Coordinates:  
37°58'1.36"N 23°41'40.82"E

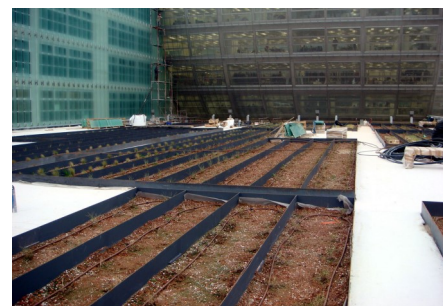
### Conception

The two four-storey buildings forming an "L" accommodate the clothing import and sales company „Shop & Trade“ as well as a supermarket with an underground car park. The shells of the two buildings are meant to resemble a fabric folded in pleats.

The centre of the complex is the roof garden, situated on the underground garage. In order to emphasize the open airy character of the building, grasses

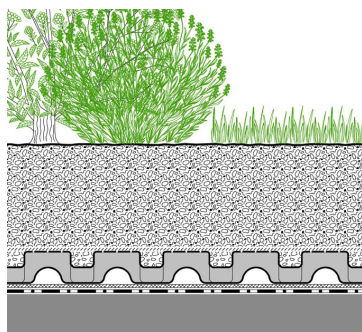
were planted, which are now swaying in the breeze. Between the single rows of plants benches and trees in planters are situated. The elaborately designed terrace was realized with the system build-up "Roof Garden" based on the proven Floradrain® FD 60.

Due to the hot and dry climate an additional irrigation system in the form of dripper lines has been installed within the planting beds.



To make sure the vegetation maintains its green character even during hot summer months dripper-lines have been installed within the planting beds.

### System Build-up



Plant layer according to Plant list

System Substrate "Roof Garden"

Filter Sheet SF

Floradrain® FD 60

Protection Mat ISM 50

Roof construction with  
root resistant waterproofing

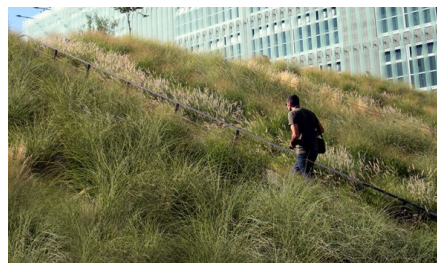


The system build-up based on Floradrain® FD 60 protects the waterproofing and contributes to the thermal insulation of the building.

### Development



In the pitched roof area Georaster®-elements have been applied to hold the substrate.



In September 2011 one could hardly recognize the stairs between the tall grasses.



From the office complex on the ground floor one has a spectacular view on the pitched green roof.